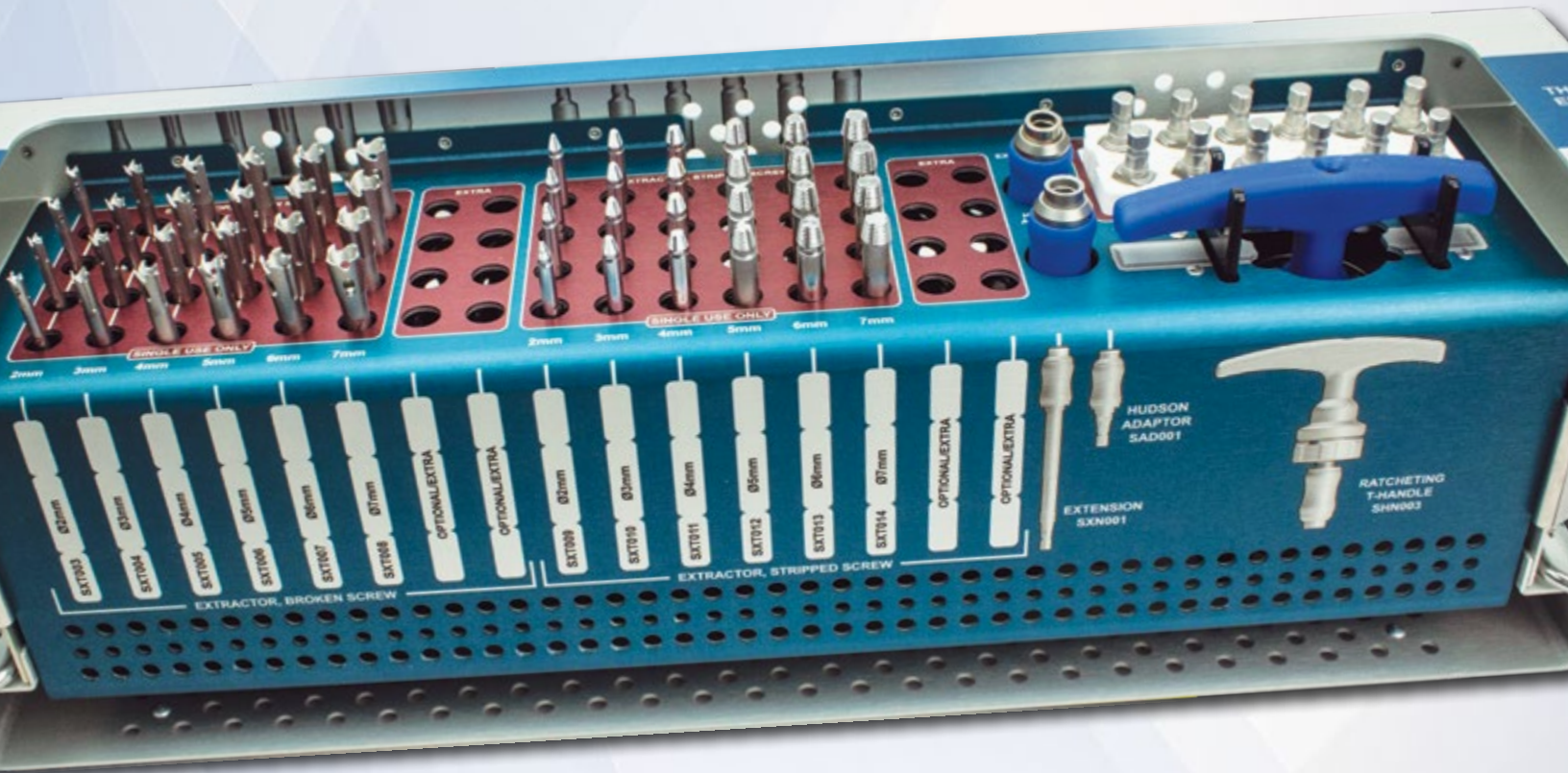


SHUKLA SCREW

Universal Broken & Stripped Screw Extraction Solution



SHUKLA MEDICAL[®]

Universal Orthopedic Extraction Technologies

Revolutionizing the Art of Revision Surgery

CONTENTS

Introduction	3
Product Description	4
Preoperative & Intended Use.....	6
Surgical Technique	7
Broken Screw Extractors	7
Stripped Screw Extractors	8
Extractor Attachment	9
Carbide Drill Bits	10
Special Situations	12
Cleaning & Sterilization	13
Components	13
Notes	14

SHUKLA SCREW

Universal Broken & Stripped Screw Extraction Solution

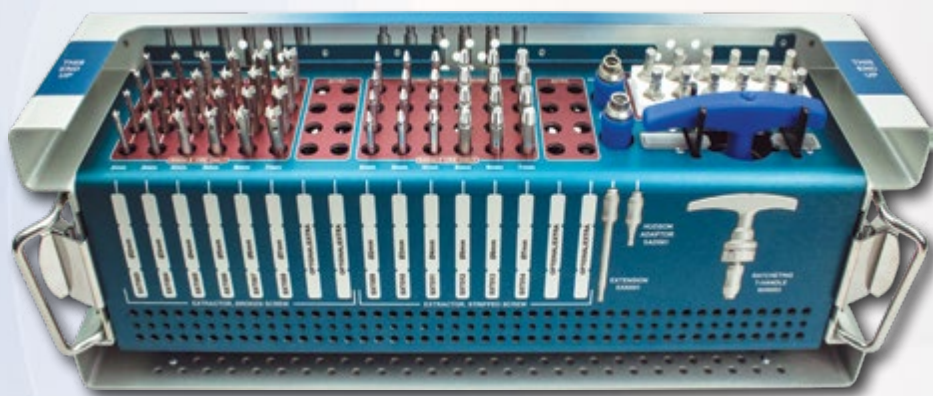
System Name: SHUKLA Screw

Part Number: S9SCREW

Version: 3

Primary Use

The SHUKLA Broken & Stripped Screw system is a universal screw removal system designed to remove all broken, stripped, and seized bone screws with minimal bone loss to the patient. This set is perfect for all spinal and orthopedic surgical procedures.



System History

The original version of the SHUKLA Screw system was the first system developed internally after the acquisition of Snap-On Medical. At the time, the market was not offering anything even remotely universal and we knew we could do it better than anyone else. The Screw v1 was born from the frustration of surgeons trying to remove a screw that had been broken or stripped prior to or during the revision surgery.

In 2007, version 2 (v2) made the smart move towards disposable extractors, eliminating the issue of metal on metal galling ruining the integrity of the extractors, as well as eliminating the need of cleaning intricate geometry. The v2 was so effective at removing broken & stripped screws that surgeons and hospitals found it difficult to imagine, believing the claims of removing screws in seconds to be absurd. Our Product Manager then created the Bone Block Demo, which proved to be a complete game changer. The act of actually seeing the SHUKLA Screw in action turned skeptics into believers, and the system began to fly off the shelves.

The current v3 of the system launched in 2016 and added a ton of improvements to an already stellar set.

BROKEN SCREW EXTRACTOR

An extractor designed to remove broken screws, with an extended neck length to help reach screws that are deeply buried. Bone clearing windows, reverse cutting threads, and trephine teeth all come together to make the removal quick and to minimize bone loss.



Bone clearing window to allow bone to pass through to prevent blockage.



Tapered reverse threads capture the screw quickly while trephine teeth cut through bone.

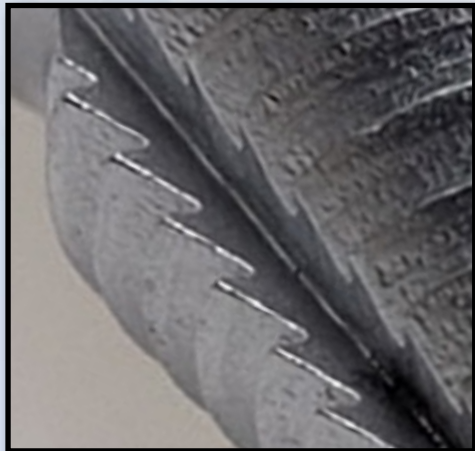
HUDSON ADAPTER

The Hudson Power Adapter lets surgeons connect to a power drill for even faster screw removal. Each extractor can quickly connect for rapid swapping out for any situation.

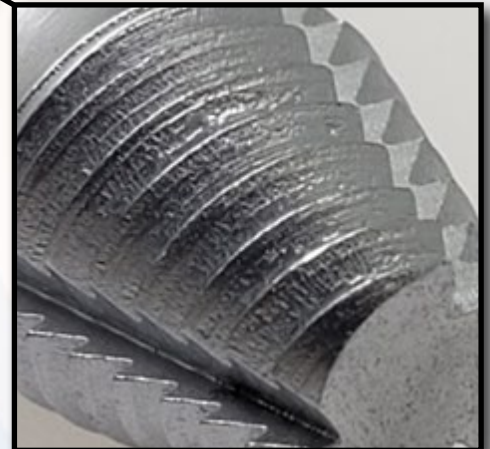


STRIPPED SCREW EXTRACTOR

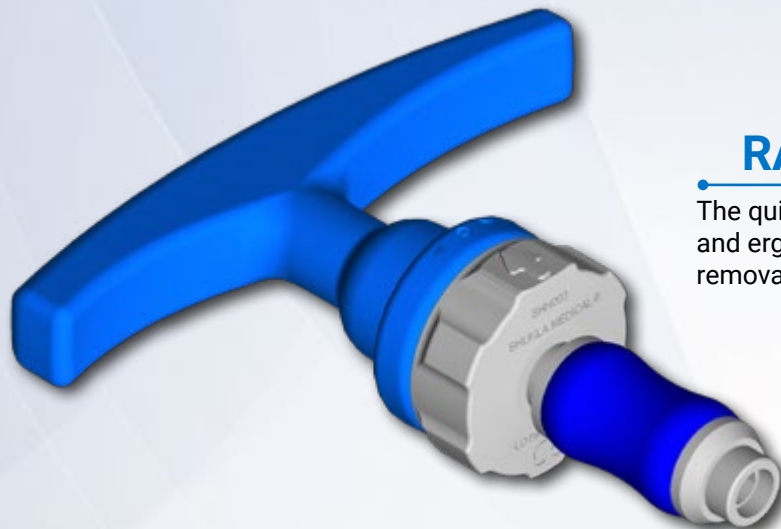
An extractor designed to remove stripped screws, with a low profile angle to help reach it further. It can even go through spinal tulips to get to the screw inside. It contains reverse cutting threads and metal clearing flutes to make sure screw engagement happens quickly.



Metal clearing flutes remove the excess chips from the screw as the stripped well becomes engaged.



Reverse threading cuts new threads into the wall of the stripped screw well.



RATCHETING T-HANDLE

The quick connect Ratcheting T-Handle with locking capability and ergonomic design grants easier and simpler screw removal with less fatigue.

Preoperative

- Clear x-rays and surgical notes may be used to identify manufacturer, brand, location, & condition of implanted hardware.
- The surgeon should be familiar with general principles and techniques for the removal of orthopedic implants.
- The instruments should be inspected for visible damage prior to use. Do not use the product if damage is suspected.
- Only validated cleaning and sterilization procedures should be used.

Operative

- Proper handling and storage of the instrumentation is mandatory. Damage to the instrumentation may produce stresses and cause defects, which could become a focal point for failure.

Storage

- It is recommended to store all Shukla Medical instrumentation in a clean, dry environment. Under 50% relative humidity; $\leq 75^{\circ}\text{F}/24^{\circ}\text{C}$.
- Proper handling and storage of the instrumentation is mandatory. Always inspect instrumentation for visible wear prior to use.

Intended Use

The SHUKLA Screw (S9SCREW) Universal Broken & Stripped Screw Removal System is intended for use during revision procedures for the removal of any implanted orthopedic screws that have become broken or stripped in order to facilitate implant extraction during revision surgery.

Instrumentation from Shukla Medical is recommended for use only within the intended design, and only by licensed healthcare professionals. Any uses other than those indicated may cause adverse results to the instrumentation or to the patient.

Indications for Use

For use by, or as directed by, a surgeon in any hardware removal case in which broken, stripped, or seized screws must be removed. Includes extractors and drill bits ranging in size from 2.0mm-11.5mm to remove any orthopedic screw.

Additional Recommendations

During revision procedures, the SHUKLA Mini and the SHUKLA Maxi are recommended for use in conjunction with the SHUKLA Screw for universal screw removal capabilities.

For difficult to reach screws due to implant or body geometry, the SHUKLA Screw Flex is recommended for use in conjunction with the SHUKLA Screw.

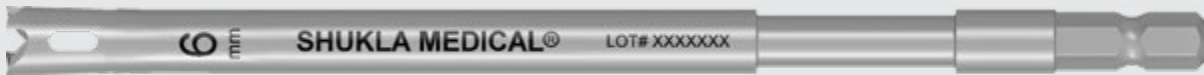
Broken Screw Extractors

SXT003-SXT008

Reverse threads inside extractor tip will capture shaft of broken screw and then back screw out of bone. Extractor must be large enough to fit over shaft of screw, and small enough that screw shaft will not bottom out inside extractor.

- Always operate in a counter-clockwise direction
- If the screw head is intact but the correct driver is not present, use a larger size extractor to capture the screw head. This technique is popular with square-headed Knowles pins.

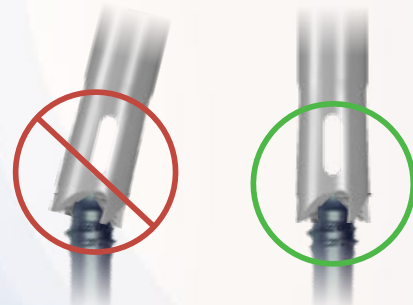
Caution: If extractor tip is larger than necessary, excess bone removal will occur. Choose smallest functional extractor size to achieve minimal bone loss.



- 1** Select the appropriate size of extractor
- Should fit completely over the screw shaft
 - Should engage with sides of shaft before bottoming out

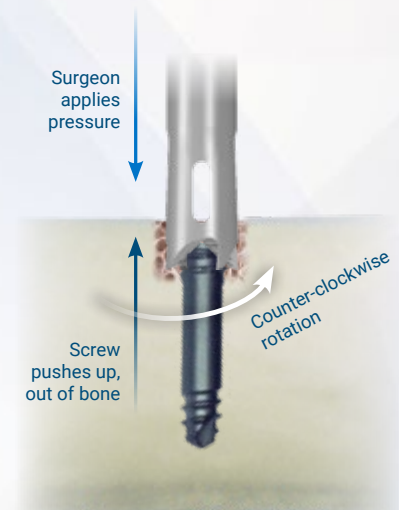


- 2** Center extractor tip over shaft of broken screw. Extractor must be aligned with screw shaft. Avoid side-bending, which can cause extractor tip to break.



- 3** Apply downward pressure with counter-clockwise torque. Trephine-like cutting teeth will dig into proximal bone only until reverse threads inside extractor grip onto screw shaft and immediately back screw out of bone.

- 4** Continue applying torque until screw is completely freed.



Broken screw extractors (SXT003 through SXT008) are single-use only and must be discarded after case completion.

Stripped Screw Extractors

SXT009-SXT014

If screw socket is intact but cannot engage with standard drivers, use Stripped Screw Extractors to remove screws from bone.

Reverse threads on extractor tip will bite into screw head socket and back screw out of bone. Extractor must fit into screw head so that the threads at the tip engage with side walls of screw socket without striking bottom of socket.

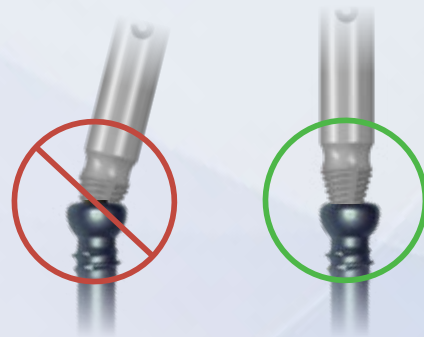
- Always operate in a counter-clockwise direction
- It may be necessary to test multiple extractors before correct size is identified. If extractor tip fits into screw socket but does not engage, go up one size and try again.
- Drill Bits (SBT001-SBT006) can be used to deepen, clean up, and better define the screw well socket.
- If the Stripped Screw Extractor does not properly seat, it is recommended to try a Broken Screw Extractor (SXT003-SXT008)



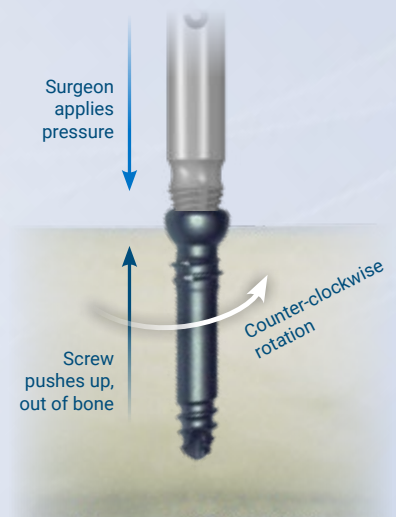
- 1 Select the appropriate size of extractor
 - Should fit into the screw socket
 - Should engage with sides of screw well before bottoming out



- 2 Set extractor tip into socket of stripped screw. Extractor must be aligned with screw shaft.
 - (Illustrated with a red 'X' over an angled tip and a green circle around a straight tip)



- 3 Apply downward pressure with counter-clockwise torque. Reverse threads on extractor tip will bite into stripped screw socket and immediately back screw out of bone.
 - If extractor bottoms out in the screw head socket before biting deep enough, it is too small. Use the next size up.
 - If extractor does not go deep enough into screw head to get a good bite, it is too large. Try a size smaller.
 - If the Stripped Screw Extractor cannot achieve a good connection with the screw, and all above methods have been tried, then use a Broken Screw Extractor to engage the entire screw head.



- 4 Continue applying torque until screw is completely freed.

Stripped screw extractors (SXT009 through SXT014) are single-use only and must be discarded after case completion.

- 1 Determine shaft size of exposed screw and assess whether a Broken or Stripped Screw Extractor is required for removal. Select single-use extractor in corresponding size and type. If screw is embedded, estimate diameter of screw shaft using x-ray imaging with applied scale factor.



- 2 Attach extractor to T-Handle or drill by extending Hudson Quick Connect outer sleeve, inserting extractor, and releasing sleeve to lock extractor in place. To disconnect the extractor, slide outer sleeve towards extractor tip and pull extractor from Hudson Quick Connect.

- **Manual Use:** Attach Extractor to Ratcheting T-Handle (SHN003). Choose ratcheting direction by turning arrow to forward, neutral, or reverse position on handle.
- **Powered Use:** For use under power, connect extractor to drill with Hudson Quick Connect Adapter (SAD001)
- **Extended Reach:** If needed, use Hudson Quick Connect Extension (SXM001) to attach Extractor to T-Handle or surgical drill.



- 3 Align extractor tip with screw. Apply torque in a **counter-clockwise** direction. Reverse threads on extractor should engage screw and immediately back screw out of bone or plate.

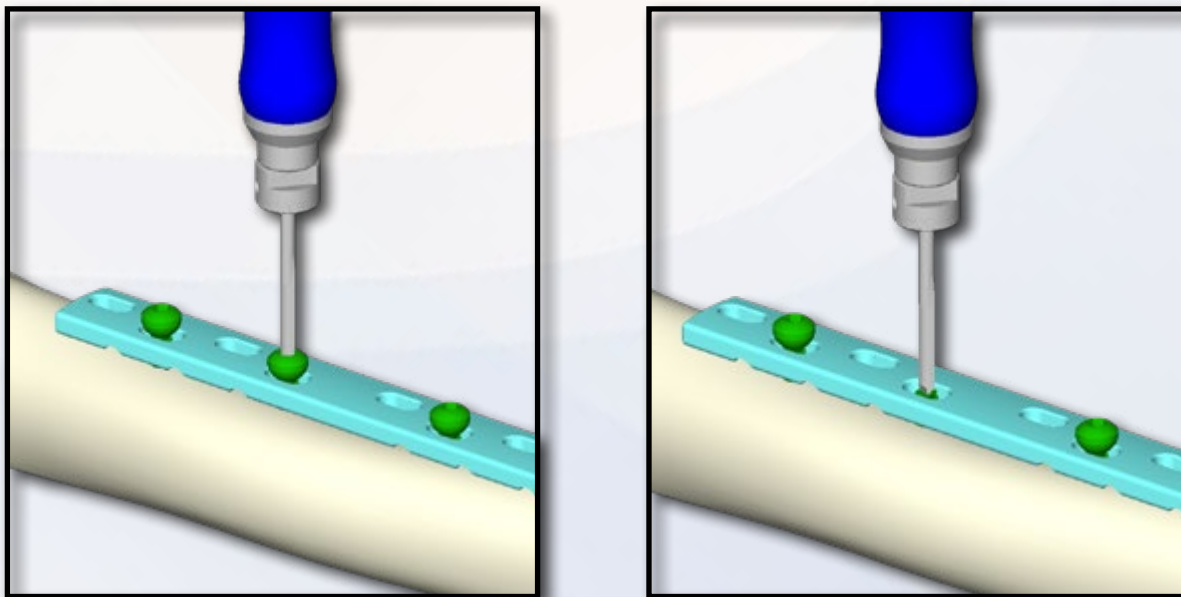
- 4 Broken and stripped screw extractors (SXT003 - SXT014) must be discarded after completion of the surgery. **Extractor tips and drill bits are not reusable.**



When to Use a Carbide Drill Bit

If a screw needs to be modified first before using an extractor, a carbide drill bit may be used. Carbide is an extremely hard material that can cut through any titanium or steel orthopedic screw. Some reasons a screw may need to be modified are:

- To deepen, clean up, and better define the screw well to allow an extractor to properly bite into the screw.
- To drill the head off a screw if it is cold welded with a plate. This allows the plate to be removed once all of the screw heads are removed.



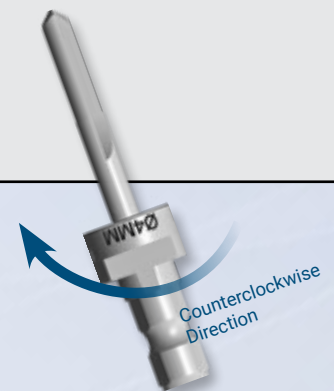
Carbide drill bit removing the head of a screw, paving the way for a plate to be removed with minimal bone loss so that the screw shaft can then be extracted easily.

Drill Bits

SBT001-SBT006

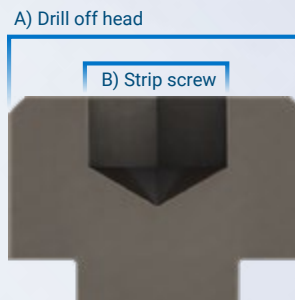
Facilitate screw extraction by drilling out and deepening a screw well, or by completely removing the screw head.

- Always operate in a counterclockwise direction



A) To prep for a broken screw extractor, use a drill bit size that corresponds to diameter of screw head to drill off the entire screw head. The drill bit should be larger than the shaft diameter and smaller than the head diameter.

B) To prep for a stripped screw extractor, use a drill bit size that corresponds to the screw interface to clean up or deepen the well.



How to Use a Carbide Drill Bit

- 1 Determine shaft size of exposed screw and assess whether a Carbide Drill Bit is required for removal. Select single-use drill bit in corresponding size. If screw is embedded, estimate diameter of screw shaft using x-ray imaging using applied scale factor.



- 2 Attach extractor to T-Handle or drill by extending Hudson Quick Connect outer sleeve, inserting drill bit, and releasing sleeve to lock extractor in place. To disconnect, slide outer sleeve towards drill bit and pull drill bit from Hudson Quick Connect.

- **Powered Use:** Connect drill bit to drill with Hudson Quick Connect Adapter (SAD001)
- **Extended Reach:** If needed, use Hudson Quick Connect Extension (SXN001) to attach drill bit to surgical drill.



- 3
 - Set the drill bit in the well of the screw. Keep the drill bit aligned with the screw as much as possible. The drill bits are made of carbide which is extremely hard yet also brittle, and can break from excessive side-loads.
 - Apply downward pressure and apply counter-clockwise torque. The drill bit will drill off the head of the screw. It might also catch the screw and back it out.

Instructions for Proper Drill Bit Use

Since carbide is a brittle material it may shatter into small fragments when it breaks. Therefore, it is important to follow the suggested guidelines that will help you use your drill bits safely:

- Drill as straight as possible to reduce side loads.
- Use a drill bit that fits the screw well as much as possible to keep the drill bit aligned.
- Drill on ream speed to avoid breakage.
- Ensure that the drill is set in reverse.
- Continuously drill while the bit is in the well so it is always cutting.
- Don't turn or twist the drill while drilling to prevent snapping the bit.
- If the drill bit gets stuck, remove the bit from the drill and carefully remove the bit by hand or pliers.
- The smaller the drill bit, the more prone it is to breaking.

If the bit breaks, remove all of the broken pieces.

Special Situations

You may encounter some scenarios which require special techniques. Here are some ways to solve these issues.

Screw Well Too Shallow

When using a stripped screw extractor and the extractor can't securely attach to the screw to remove it, then the screw well may be too shallow. When this happens, there are several possible solutions.

1. Try the next size up stripped screw extractor and see if that one can engage the screw. Discard all used extractors.
2. If no stripped screw extractors are engaging, the screw well can be deepened or cleaned up with a carbide drill bit. Find the largest drill bit that can fit within the well and use it to deepen the well. Follow the procedure for using carbide drill bits. Ensure that the drill is in reverse. Discard all used drill bits.
3. Alternative to option 2 or if option 2 doesn't work, is to use a broken screw extractor that fits over the head of the screw.

Screws Cold-Welded to Plate/Locking Plate Removal

Over the course of time, some screws can become "cold-welded" to a plate. When this happens, the screws can be nearly impossible to remove with a driver or a screw extractor. To easily remove a plate and screws in this case, follow these steps:

1. Find a carbide drill bit that fits within the screw well but is smaller than the outer diameter of the screw head. It is important that it is smaller than the screw head so that you can use the screw well as a guide.
2. Following the procedure for using carbide drill bits, drill through the head of the screw until it comes off. Ensure the drill is in reverse. Repeat this for each screw on the plate.
3. Once the screw heads are drilled off, the plate can be removed.
4. Find a broken screw extractor that fits over the screws remaining in the bone. Follow the procedure for removing broken screws. Ensure the drill is in reverse.

Screw Break Mid-Shaft

If screw is broken mid-shaft and both sections are accessible, pieces may be removed separately. Use Broken Screw Extractors (SXT003-SXT008) to capture exposed screw ends.

Follow the procedure for removing broken screws. Ensure the drill is in reverse to back pieces out of bone. Carbide Drill Bits can be used to clear a path to the buried broken distal screw. Then, a Broken Screw Extractor can be used to capture and remove the broken screw.

Screw Too Large to Remove

If the screws present in the implant are larger than 8 mm for broken screws or 7 mm for stripped screws, special larger extractors can be ordered.

Large special order Broken Screw Extractors (**SXT015 - SXT018**) can remove broken screws from 8 mm to 11 mm in diameter. Large special order Stripped Screw Extractors (**SXT026 - SXT029**) can remove stripped screws from 8 mm to 11 mm in diameter.

All Shukla Medical surgical instruments require manual cleaning with a neutral pH cleanser. Open and disassemble all instruments, making sure to remove all contamination during cleaning. Instruments must be reassembled prior to sterilization. Machine washing is not recommended. Maintenance and care using an autoclaveable lubricant on movable parts is required to preserve the life of the instrument. For more cleaning, inspection, maintenance, and care tips, contact Shukla Medical directly.

For detailed cleaning and sterilization instructions, please visit www.ShuklaMedical.com/Sterilization



Emergo Europe
Prinsessegracht 20
2514 AP The Hague
The Netherlands



S9SCRW
S9SCREW



SHUKLA Medical
8300 Sheen Drive
St. Petersburg, FL 33709
USA



CONSULT
INSTRUCTIONS
FOR USE



NON-STERILE
PRODUCT



COMPONENTS LIST

Component List			
Std Qty	Part Number	Description	Effective Range
1	SCS003	Case & Lid, Broken & Stripped V2 System	
1	SHN003	THandle Assy, Ratcheting, Hex, 1/4", with Quick Connect	
1	SXN001	Adapter Assy, Hudson to Hex, 6"	
1	SAD001	Adapter Assy, Hudson Power Drill, 2.75"	
2	SBT001	Drill Bit Assy, Carbide, Hudson End, 2 mm, <i>Single Use</i>	
2	SBT002	Drill Bit Assy, Carbide, Hudson End, 3 mm, <i>Single Use</i>	
2	SBT003	Drill Bit Assy, Carbide, Hudson End, 4 mm, <i>Single Use</i>	
2	SBT004	Drill Bit Assy, Carbide, Hudson End, 5 mm, <i>Single Use</i>	
2	SBT005	Drill Bit Assy, Carbide, Hudson End, 6 mm, <i>Single Use</i>	
2	SBT006	Drill Bit Assy, Carbide, Hudson End, 7 mm, <i>Single Use</i>	
4	SXT003	Extractor, Broken Screw, 2 mm, 6" long, <i>Single Use</i>	2.0-2.5mm
4	SXT004	Extractor, Broken Screw, 3 mm, 6" long, <i>Single Use</i>	2.5-3.5mm
4	SXT005	Extractor, Broken Screw, 4 mm, 6" long, <i>Single Use</i>	3.5-4.5mm
4	SXT006	Extractor, Broken Screw, 5 mm, 6" long, <i>Single Use</i>	4.5-5.5mm
4	SXT007	Extractor, Broken Screw, 6 mm, 6" long, <i>Single Use</i>	5.5-6.5mm
4	SXT008	Extractor, Broken Screw, 7 mm, 6" long, <i>Single Use</i>	6.0-8.0mm
4	SXT009	Extractor, Stripped Screw, 2 mm, 6" long, <i>Single Use</i>	2.0mm
4	SXT010	Extractor, Stripped Screw, 3 mm, 6" long, <i>Single Use</i>	2.5-3.5mm
4	SXT011	Extractor, Stripped Screw, 4 mm, 6" long, <i>Single Use</i>	3.5-4.5mm
4	SXT012	Extractor, Stripped Screw, 5 mm, 6" long, <i>Single Use</i>	4.5-5.5mm
4	SXT013	Extractor, Stripped Screw, 6 mm, 6" long, <i>Single Use</i>	5.5-6.5mm
4	SXT014	Extractor, Stripped Screw, 7 mm, 6" long, <i>Single Use</i>	6.0-7.0mm

**Single-use Only: Always use new extractors and drill bits in every procedure.
Discard any used single use parts at the conclusion of the case.**



Revolutionizing the Art of Revision Surgery

Shukla Medical designs & manufactures instrumentation for orthopedic implant extraction in St. Petersburg, Florida, USA.

In 1998, aerospace component manufacturer S.S. White Technologies, Inc. acquired the Snap-On Winquist IM Nail system. S.S. White rebranded the medical division in 2007 to create Shukla Medical.

Today, Shukla Medical is the industry leader in orthopedic implant extraction tools. We are the only company to offer a comprehensive, truly universal orthopedic revision line for removing IM nails, hip and knee implants, spine hardware, and broken or stripped screws. Surgeons and industry leaders know: **If Shukla can't get it out, no one can.**

Contact us to learn more

Shukla Medical
8300 Sheen Drive
St. Petersburg, FL 33709
www.ShuklaMedical.com

T: 888-4-SHUKLA
T: 888-474-8552
F: 727-626-2770
CS@ShuklaMedical.com